

**PROGRAMME**



# **DEAFFEST**

THE UK'S LEADING DEAF-LED FILM & ARTS FESTIVAL

**6 - 8 MAY 2016**

[www.deaffest.co.uk](http://www.deaffest.co.uk)



Sign language communication solutions  
using today's technology



**“Just because we can’t hear you...”**



A unique, creative business focused on digital media and  
communication closely linked to the Deaf Community



### **Interpreting Services**

#### **Qualified and highly trained interpreters**

- British Sign Language
- Sign supported English
- Finger spelling
- Lipspeaking
- Note-taking
- Speech-to-text
- Deafblind
- Deaf-relay
- International Sign Language

### **Multimedia**

#### **Award winning Deaf media specialists**

- Website sign language pop ups
- DVD/Films
- Hand held BSL guides
- Production access-subtitling/voiceover
- Video to DVD conversion
- DVD Duplication

### **Media Training**

#### **Stimulating and challenging media training**

- Film Production
- Animation
- TV Presentation
- TV In-Vision Interpreting
- Performing Arts

### **Training**

#### **Training for both hearing & Deaf people**

- Equality Audits & Consultation
- Deaf Awareness Training
- Health Seminars
- Employment Training

**“Find out more...”**

[www.zebra-uno.com](http://www.zebra-uno.com)  
01902 421919/711688

# Deaffest 2016

## Friday 6th May 2016

£2 entry at the door (under 16 years - FREE)

**6.30pm**

### Opening Reception

Light refreshments on arrival. Informal chat and networking in the courtyard at Light House.

**8.30pm**

### Launch of Deaffest 2016

(All ages welcome, doors open at 8.00pm)

Launch of Deaffest 2016 in **Cinema One**. Hosted by Deaffest's co-founders Nikki Stratton and Marilyn Willrich, with special features on BBC See Hear's 35th anniversary and BDA's 125th anniversary. Live entertainment by Rinkoo Barpaga and Matthew Gurney and a special screening of BBC See Hear's archive clips.

**9.30pm**

### Power In Our Hands

Dir. Angela Spielsinger, UK, 2015 (Dur. 72 mins)  
**Cinema One, Light House**

Power in Our Hands is a ground-breaking documentary containing newly digitised archive footage, available to the public for the first time, on the Deaf Community's fight for civil rights and principally, the right to be heard. Combining social history and archive film with contemporary interviews, and released in the 125th anniversary

year of the British Deaf Association, Power in our Hands explores the secret history and heritage of the Deaf community in the UK. Power in our Hands is part of the BDA's SHARE Deaf Visual Archive Project ([www.sharedeafarchive.org](http://www.sharedeafarchive.org)) supported by the Heritage Lottery Fund.



**10.15pm**

### Networking in Lock Works, Light House

(You must be 18 or over to attend. Please bring your ID with you)



### TICKETS FOR SATURDAY 7TH MAY (EVENING ONLY)

Pre-paid tickets for the evening events (in the form of a wristband) can be collected from the Deaffest Stall in the Courtyard at Light House during Saturday daytime. Please bring proof of purchase i.e. email to confirm your tickets have been paid. Please take advantage of this opportunity to collect your wristband early, as it will mean less queuing on the night!

Tickets can also be purchased from the Deaffest Stall Saturday daytime  
10.00am - 4.00pm.

### DEAF ART / PHOTOGRAPHY EXHIBITION

Art and Photography exhibition by deaf artists will be on display throughout the whole of May in the main gallery at Light House.

**We welcome voluntary donations,  
which can be given via the red  
buckets located around Light House**

### Please note:

Filming and photography by the Deaffest media team will take place throughout the weekend.

# INTERPRETERNOW



## *freedom to communicate*

InterpreterNow provides instant, online interpreting between BSL and English users via a phone, iPad or PC.

Using InterpreterNow you can:

- Make free phone calls to registered organisations
- Take calls from registered organisations
- Make free video-to-video calls to friends and family
- Access services in BSL such as NHS111, Contact Scotland, NHS Customer Contact Centre and Leicestershire Police 101

**INTERPRETERNOW.co.uk**



# Activities & Workshops

## Light House: Saturday 7th May 2016

The Chubb Buildings, Fryer St, Wolverhampton WV1 1HT

**9.00am Registration**  
**£2 entry at the door**  
**(under 16 years - FREE)**

■ Deaffest's 10th anniversary albums ■  
■ will be on sale at the special price ■  
■ of £10, for this weekend only. Get ■  
■ your copy from the Deaffest stall! ■

**9.30am - 12.55pm**

**Film Screenings**

**Cinema One**

Please refer to Page 11 for more details.

**10.00am - 4.00pm**

**Deaffest Stalls Fair**

**Courtyard**

Throughout the day at Light House you can browse the stalls out in the courtyard. Join in the activities, try our delicious food stalls, buy a selection of original art and craft or source the information you need from deaf related businesses.

**11.00am - 12.30pm**

**Vamos Theatre Performance Workshop**

**Studio Cinema**

Suitable for ages 11-17

This relaxed and fun session with Rachael Savage, the Artistic Director of the UK's leading full mask company, Vamos Theatre. During this workshop Vamos will familiarise you with the basic rules of the mask, 'hot seating' (a way to develop an on-stage character), using mask in performance, and the skills and awareness involved in telling a story without words.

Pre-booking required.

**1.00pm - 2.00pm Recess**

**1.30pm - 2.00pm**

**Exhibiting Artists' Talk**

**Main Gallery**

Want to find out more about the inspiration and techniques behind some of the pictures in our Deaf Art & Photography Exhibition? Some of our exhibiting artists/ photographers will be giving short talks about their work and answering your questions.

(This event will be interpreted)

**2.00pm**

**Young Deaffest**

**Cinema One**

Come along and see the Young Deaffest Poster Competition entries and winners, and watch a live performance by Solar Bear Deaf Youth Theatre all the way from Glasgow!

(This event will be interpreted)

**2.45pm - 3.45pm**

**"How to Finance Your Film" Seminar**

**Cinema One**

Led by Infinite Wisdom Studios Producer Michael Ford, a seminar about pitching film and TV ideas to potential broadcasters or studios, and raising funds for your film.

(This event will be interpreted)

**3.45pm - 4.45pm**

**"Be Creative With Your Film"**

**Panel Discussion**

**Cinema One**

Have you wondered how to be more creative with your filmmaking? Have you envied the extreme styles of Directors like Tim Burton and Quentin Tarantino? Well then this is your lucky day! Come and join our panel discussion to explore ways to enhance your filmmaking through the use of special effects and animation. Take your filmmaking to the next creative level with tips from the panel.

(This event will be interpreted)

**4.45pm - 5.30pm**

**BDA Seminar**

**Cinema One**

Following on from the screening of 'Power in our Hands' on Friday evening, representatives from the film will discuss this ground-breaking project. Booked by over sixty cinemas across the UK - including the Odeon cinema chain - this seminar will explore the making of the film and how it has been received by Deaf and hearing audiences. It will also offer insight into the wider archive project and fundraising for it, the importance of preserving sign language on film, and how filmmakers can access archive material for use in their own work.

(This event will be interpreted)

**5.30pm - 7.00pm Recess**

**For workshops that require pre-booking, visit the Deaffest stall on Saturday 7th May to check for availability on the day.**

# Activities & Workshops

## Arena Theatre: Saturday 7th May 2016

Wulfruna Street, Wolverhampton WV1 1SE

**10.00am - 4.00pm**

**Kids' Deaf-Led BSL Event:**

**Full Day Workshop** (Suitable for ages 5-8)

Tilstone Studio

As part of our comedy theme for Deaffest 2016 we have some super fun activities for children aged 5-8! Join in with a wide range of activities including a Comedy Craft Workshop, Story time, Magic Hands workshop, Comedian John Smith and Stardazzle Parties.  
Pre-booking required.

**10.00am - 4.00pm**

**Kids' Deaf-Led BSL Event:**

**Full Day Workshop** (Suitable for ages 9-11)

Seminar Room

As part of our comedy theme for Deaffest 2016 we have some super fun activities for children aged 9 - 11! Learn how to make people laugh in our Comedy Workshop led by comedian John

Smith and become masked entertainers with Vamos Theatre's Mask Performance Workshop.  
Pre-booking required.

**11.00am - 2.00pm**

**Giuseppe Giuranna VV Workshop**

Arena Main Theatre

(Suitable for over 18)

VV expert Giuseppe Giuranna from Berlin gives students a unique opportunity to learn this fascinating art from a world expert!

Pre-booking required.

**2.30pm - 5.30pm**

**John Smith Adults Comedy Workshop**

Arena Main Theatre

(Suitable for over 18)

Try your skills at comedy performance with tips and inspiration from our comedy expert John Smith.

Pre-booking required.

---

## University of Wolverhampton:

### Saturday 7th May 2016

**10.00am - 1.00pm**

**Paul Miller Illustration Workshop**

**Location: please ask at Deaffest Stall**

(Suitable for ages 11-16)

Animation expert Paul Miller will show you how to illustrate a children's book from start to finish, from rough thumbnail ideas to full size finished illustrations.

Pre-booking required.

any questions you may have about living and studying here. Book your place at our University of Wolverhampton stand on the courtyard at Light House.

**11.00am - 12.00pm and**

**2.00pm - 3.00pm**

**University Tours**

Interested in studying for a degree at the University of Wolverhampton? Come on a walking tour of the City campus led by current Deaf students. You can have a look around and ask

**2.00pm - 5.00pm**

**Paul Miller Animation Workshop**

**Location: please ask at Deaffest Stall**

(Suitable for ages 11-16)

Animation expert Paul Miller will show you how to create 2D and 3D animation from start to finish. Learn about the history of animation and create a traditional Thaumatrope and flipbook then progress to stop motion animation with an iPad. Participants will gain experience in directing, camera and clay animation.

Pre-booking required.





## BRITISH SIGN LANGUAGE BROADCASTING TRUST

### **BSLBT is proud to support Deaffest 2016**

The British Sign Language Broadcasting Trust (BSLBT) - who commission programmes shown on TV and online on the BSL Zone - are once again sponsoring Deaffest.

Since BSLBT was established in 2008, many of our programmes, including films and documentaries, have been shown on the big screen at Deaffest.

At Deaffest 2015, four of our programmes won awards, **Tree Fairy**, **Small World** and **Scottish Islanders**, plus our web-only drama **4**.

This year, more of our most recent programmes will be shown on screen during the festival. Make sure you see them all.

We will have a stall in the marketplace, where members of staff and our board will be available to meet you, our audience.

Thank you for continuing to watch our programmes.

We hope everyone who attends this year's festival has a fantastic time.

  [bslzone.co.uk](http://bslzone.co.uk)

 [facebook.com/bslzone](https://facebook.com/bslzone)

 [twitter.com/BSLZone](https://twitter.com/BSLZone)



## Want to make your own smoothie?

There's also a chance to tell us what's important to you as a deaf young person – and pick up some information and resources to take home

Come and have a go on one of our smoothie bikes – we have lots of great flavours!



The National Deaf Children's Society is the leading charity dedicated to breaking down the barriers for deaf children and young people.

109941



LOTTERY FUNDED



Helping Hands is funded by the National Lottery through the Big Lottery Fund

NDCS is a registered charity in England and Wales no. 1016532 and in Scotland no. SC040779.

**ndcs**  
every deaf child

# Saturday Evening

## TICKETS ARE REQUIRED FOR THIS EVENT

Please note that doors will be closed at 8.30pm to avoid disturbing the audience.

**8.30pm - 11.00pm**

### Deaffest 2016: Celebration of Deaf Comedy

Cinema One, Light House

(Doors open at 8.00pm)

Deaffest has a comedy theme this year! So forget all your worries and enjoy an evening of laughter with live comedy performances by Caroline Parker, Rinkoo Barpaga, Matt Gurney, John Smith and Giuseppe Giuranna, including a performance by David Sands as much-loved Small World character Chris Baker. In addition to the comedy show, there will also be a sneak preview of the Deaffest team's favourite film clips. The evening will be hosted by BBC See Hear's Erika Jones and Sebastian Cunliffe. (You must be 18 or over to attend)

**11.30pm - 4.00am**

### Late Night Deaf Party

(Doors open at 10.30pm)

Taking place in the courtyard at Light House following the Celebration of Deaf Comedy. Packed with a variety of live comedy acts hosted by Matt Gurney with party music throughout the night. The bar will be open until 4.00am (last orders 3.00am), so you can party into the early hours!

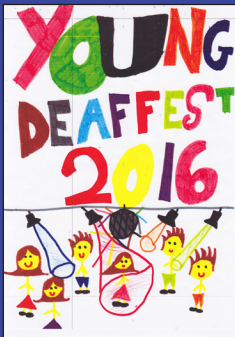
(You must be 18 or over to attend. Please bring your ID with you)



Refreshments available  
to purchase at  
The Lock Works Café Bar

Pre-paid tickets for Saturday 7th May evening only (in the form of the wristband) can be collected/purchased during the daytime at the Deaffest stall 10.00am - 4.00pm. Tickets will also be available to purchase at the door.

## WINNER OF THE YOUNG DEAFFEST 2016 POSTER COMPETITION



We held a Young Deaffest Poster Competition in 2015 asking young deaf artists to create an eye catching poster for Young Deaffest 2016. Here is the winning poster created by Jade, 11, Heathlands School.

Keep yourself up to date with Deaffest information by downloading our free app available on both Apple and Android.



For Android



For iPhone



actiondeafness



# COMMUNICATION SUPPORT FOR YOUR ACADEMIC SUCCESS

A Deaf-led educational communication support service offering flexible, affordable access to BSL interpreters, lipspeakers, notetakers and other specialist professionals and intensive mentoring for students via Skype.

✉ [bookings@cseeker.co.uk](mailto:bookings@cseeker.co.uk)  
 ☎ 07988 050 863 (SMS only)  
 f [fb.com/cseeker.co.uk](https://www.facebook.com/cseeker.co.uk)  
 @cSeekerUK

communication  
plus | sign  
language  
services

**SOLAR BEAR**



Royal Conservatoire  
of Scotland



## BA Performance in British Sign Language and English

*A three year undergraduate  
programme for deaf performers*

[rcs.ac.uk](https://rcs.ac.uk)

## WOLVERHAMPTON GRAND THEATRE



VISIT [GRANDTHEATRE.CO.UK/ACCESS](https://www.grandtheatre.co.uk/access)  
FOR THE LATEST INFORMATION ON ACCESSIBLE SHOWS!

  
**BRITISH DEAF ASSOCIATION**  
 Celebrating 125 Years



# Deaffest

The University of Wolverhampton is proud to sponsor Deaffest 2016, the UK's leading Deaf-led film and arts festival.

Are you interested in studying film, art or one of the many other subjects available at our University? Come along to an Open Day to find out more about our courses, and to learn about the services and support we offer Deaf and Hard of Hearing students.

“

I chose Wolverhampton because of its outstanding reputation for having a strong deaf community. My course is very accessible to deaf people. The Student Enabling Centre's professional interpreters met my every need. I cannot recommend University of Wolverhampton highly enough!

”

Rosie, BA (Hons) Video and Film Production

## **Open Day:**

**Saturday 18 June 2016**

## **Postgraduate Open Evening:**

**Thursday 23 June 2016**

To register and for more information, visit: [wlv.ac.uk](http://wlv.ac.uk)

# Films

## Saturday 7th May 2016

Cinema One, Light House

**9.30am**

### **Close Up - Doug Alker**

Dir. Ted Evans, UK, 2015 (Dur. 28 mins)

Doug Alker talks about his role as a leading figure in the Deaf world over the past 30 years. He describes the childhood experiences that helped make him the driven person that people see.

After working as a chemist, a trade union rep, a semi-professional magician and a player and coach in both football and rugby, in the 1980s he led the Deaf Tribune Group, which transformed and democratised the British Deaf Association (BDA). There followed controversial spells as Chief Executive of the Royal National Institute for Deaf People and Chair of the BDA. In between he even set up a new organisation, the Federation of Deaf People. He also describes how his public life impacted on his private life.

**10.00am**

### **Close Up - John Smith**

Dir. Ted Evans, UK, 2015 (Dur. 28 mins)

John Smith talks to Tessa Padden about his meteoric rise to prominence as Britain's best and most famous Deaf stand-up comedian. He describes the painful shyness that prevented him from going on stage until he was 40. Raised in a hearing family, with minimal communication, he went on to work as a joiner for 20 years in an environment that

he felt was full of discrimination. He uses these experiences, and those of his previous jobs as an aerobics teacher and an advice worker, as sources for his comedy, which has taken him all over the world. He also reveals a caring and passionate side to his character and discusses his strongly held beliefs about how to improve the lives of Deaf people, especially children and older people.

**10.30am**

### **Lost Spaces**

Dir. David Ellington, UK, 2016 (Dur. 23 mins)

A sequel to Lost Community, this documentary highlights the one year 'Lost Spaces' project, which focuses on the struggles of the members of the Deaf community in Bristol.

**10.55am**

### **The Frog King**

Dir. Kilian Knorz, Germany, 2015 (Dur. 18 mins)

A fairy-tale by the famous Brothers Grimm, in German Sign Language (DGS) with English subtitles.

**11.15am**

### **The Battle for BSL**

Dir. Ted Evans, UK, 2015 (Dur. 28 mins)

The story of how, in 2015, BSL achieved legal status for the first time, in the Scottish Parliament.





## 11.45am Nonsense

Dir. Max Clendaniel, UK, 2015 (Dur. 10 mins)  
Born without the abilities of sight, sound, smell, touch or taste, Gene has become afraid of the world. That is until one day, when he buys an experimental kit that gives him human senses for the first time. Now the only thing he has to worry about is his greedy roommate, Richard.

## 12.00pm Small World - Episode 3

Dir. Louis Neethling, UK, 2016 (Dur. 28 mins)  
The day gets off to a bad start. The shower breaks and the unwashed flat-mates, Laura and Alfonso, get Graham to track down a Deaf plumber. Alfonso prepares for an interview with a film magazine in an attempt to raise his profile. Laura is exposed to Deaf culture by a Deaf plumber - but is he really all that he seems? Chris Baker is still having communication difficulties with the Job Centre and is desperate for money as he is being menaced for an unpaid loan. Ryan brings home his 'friend' from work - a possible romantic rival?

## 12.30pm Super-Ego

Dir. Veru Rodriguez, Spain, 2015 (Dur. 8 mins)  
Jaime visits a bridge to kill himself but someone appears to try to talk him out of it.



## 12.40pm Secret Lab - Health & Disease

Dir. Fifi Garfield, UK, 2015 (Dur. 15 mins)  
Professor Knowitall and his two assistants, Dr Bright and Dr Spark, discover how our respiratory system works. Dr Bright is sent to a ski slope where she discovers how her blood cells transport oxygen to her muscles to keep them moving. Back in the lab, Professor Knowitall shows Dr Spark the journey of oxygen and how it enters our bloodstream. Meanwhile Dr Bright rounds up her findings with a few sparks and bangs to demonstrate how energy, which keeps our body moving, is created.

## 12.55pm Imagine

Dir. Samuel Ash, UK, 2016 (Dur. 5 mins)  
Two friends wonder what it would be like to be the last man on Earth. Then, something mysterious happens in the world. The main protagonist is sitting alone when there is a knock on the door. But is everything real?  
This film contains flashing lights.

## 1.00pm - 2.00pm Recess





# Films

## Sunday 8th May 2016

Cinema One, Light House

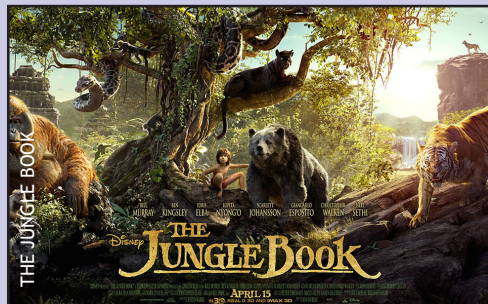
£2 entry at the door (under 16 years - FREE)

**9.30am**

### Ishaare

Dir. Annelies Kusters, India, 2015 (Dur. 80 mins)  
'Ishaare' has a double meaning. It means 'gesture' in Hindi and Marathi but it also means 'sign', indicating that a strict distinction between them cannot be made. However, although there seems to be overlap between gesture and sign language, they also differ, as the protagonists of the movie show and tell us. The film, Ishaare, documents how six Deaf signers (including one deaf-blind man) communicate with familiar and unfamiliar hearing shop-keepers, street vendors, customers, waiters, ticket conductors and fellow travellers in Mumbai. When enquiring, selling, bargaining and chitchatting, these Deaf and hearing people use gestures in combination with lip-reading, mouthing and writing.

**10.40am - 11.00am**  
Recess



**11.00am**

### A subtitled screening of Walt Disney's The Jungle Book

(Dur. 105 mins)

Directed by Jon Favreau, based on Rudyard Kipling's timeless stories and inspired by Disney's classic animated film, The Jungle Book is an all-new live-action epic adventure about Mowgli, a man-cub who's been raised by a family of wolves. But Mowgli finds he is no longer welcome in the jungle when fearsome tiger Shere Khan, who bears the scars of Man, promises to eliminate what he sees as a threat. Urged to abandon the only home he's ever known, Mowgli embarks on a captivating journey of self-discovery, guided by panther-turned-stern mentor Bagheera, and the free-spirited bear Baloo.



Invites you to 'Deaf Utopia'  
a Deaf focused event taking place  
on Saturday 17<sup>th</sup> September 2016

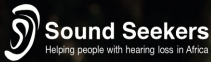
Deaf Utopia aims to celebrate Deaf  
culture in the heart of  
Northampton.

See in your goody bag for more  
information and ticket prices  
or visit

[www.facebook.com/deafutopia](http://www.facebook.com/deafutopia)

[www.deafhub.co.uk](http://www.deafhub.co.uk)

Hope to see you there!



Helping people with hearing loss in Africa

@Soundseekers

www.sound-seekers.org.uk

Please 'Text HEAR25'  
£5, £10 or £20 to 70070'



Sponsored by

SignLive

Anywhere. Anytime



Provider of quality Video Remote Interpreting and Video Relay Services

www.signlive.co.uk

Come and see us at our stall  
for more information...



deaf+PLUS  
breaking through barriers

<http://www.deafplus.org/>

# Everything local at your fingertips!



Visit us for...

- ✓ Recommended businesses
- ✓ Irresistible offers
- ✓ Local events
- ✓ Local info

[www.thebestof.co.uk/wolverhampton](http://www.thebestof.co.uk/wolverhampton)

thebestofwolverhampton

Bringing trusted businesses and the community together

TheBestOf Wolves

thebestofWolves



# Special thanks go to...

All Activity Providers  
All Deaffest Media Volunteers  
(Oh Sugar Production)  
All Deaffest Volunteers  
All Entertainers  
All Filmmakers

All Performers  
All Sponsors  
All Stallholders  
All Stand-Up Comedians  
All Workshop Providers  
Arts Council England

BFI  
Deirdre Maguire  
Discussion Panel Members  
Marcus Dickey Horley  
Mark Barber  
TY3 Media

## Zebra Uno and Zebra Access Team

Marilyn Willrich  
Nikki Stratton  
Carol Salter  
Jackie Law

Chris Beech  
Louise Buglass  
Matthew Shaw  
Jack Smallwood

Jemma Whitehouse  
Joy Terry  
Katie Mogford

## Light House Media Centre

Brian Short

Jas Kapur

Kelly Jeffs

Light House staff

## Interpreters:

Alban Ward-Welch  
Brian Duffy  
Christopher Stone  
Claire Smith  
Emma Trainor  
Gordon Hay

Henry Skinner  
Ilan Dwek  
Jay Thomas-Morton  
Joy Terry  
Katie Mogford  
Sam Allison

Sarah Hides  
Steve Richardson  
Thaisa Whistance  
Zeranna Bueno

## Our Sponsors



Lastly, your support for making Deaffest happen!

# Hosted and supported by



Zebra Uno Ltd & Zebra Access  
Creative Industries Centre, Wolverhampton Science Park,  
Glaisher Drive, Wolverhampton WV10 9TG  
t: 01902 421919  
[www.zebra-uno.com](http://www.zebra-uno.com)  
[www.zebra-access.com](http://www.zebra-access.com)

## Funded and supported by



Supported using public funding by

**ARTS COUNCIL  
ENGLAND**



Awarding funds from  
 **The National Lottery®**